



SDT340



Brochure



Manual



Datasheet

SDT270



Brochure



Manual



Datasheet

SDT270 Tank Test



Brochure



Manual



Datasheet

SDT270 Sherlog



Brochure



Manual



Datasheet

SDT200



Brochure



Manual



Datasheet

LUBExpert



Brochure



Manual



Datasheet

The Checker Range

LEAKChecker



Brochure



Datasheet

Manual



LUBEChecker



Brochure



Datasheet

Manual



TIGHTChecker



Brochure



Datasheet

Manual



TRAPChecker



Brochure



Datasheet

Manual



HATCHecker



Brochure



Datasheet

Manual



ULTRAChecker



Brochure



Datasheet

Manual



VIGILANT



Brochure



Manual



SONAVU



Brochure



Manual



Datasheet

RAPsodyBox



Brochure



Manual



Datasheet

COMMONSense



Brochure

 Datasheets
0-10V **4-20mA**
 Airborne Airborne
 Airborne Open Airborne Open
 Contact Contact
Configuration Interface
Heat Sink

T-SONIC1



Brochure

 Manual

 Datasheet

T-SONIC9



Manual

 Datasheet

EDS2



[Datasheet](#)

FLEX



[Datasheet](#)

LUBESense1



[Datasheet](#)

ParaDish2



[Datasheet](#)

RS1N + ATEX



[Datasheet](#)

RS1T + ATEX



[Datasheet](#)

RS2N



[Datasheet](#)

RS2T



[Datasheet](#)

ULTRASense



[Datasheet](#)

AIRSense



[Datasheet](#)

Remote Monitoring Box



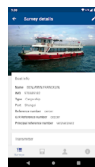
[Datasheet](#)

LEAKReporter



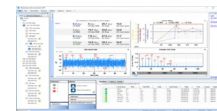
Brochure

SHERLOGReporter



Brochure

Ultranalysis® Suite 3



Manual

Certifications

[ATEX](#)

[ISO9001](#)

Sherlog:

[Lloyd's Register Type Approval Certificate](#)
[Hellenic Register of Shipping Type Approval Certificate](#)
[DNV Type Approval Certificate](#)
[ABS Sherlog170 Manufacturing Assessment Certificate](#)