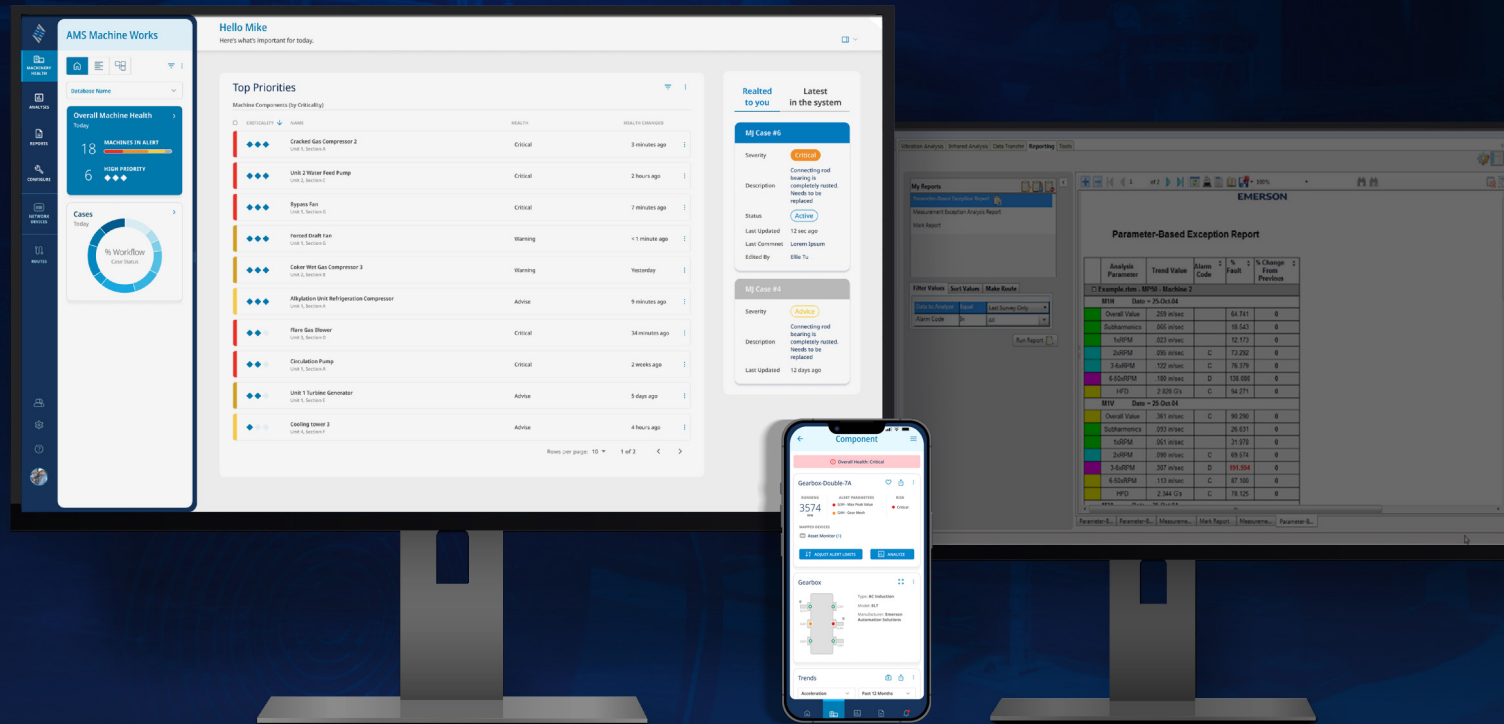


Modernize Your AMS Machinery Manager to AMS Machine Works



AMS

RMS
RELIABILITY MAINTENANCE SOLUTIONS

EMERSON



Modernize while Retaining Historical Data

Modernizing to AMS Machine Works from your AMS Machinery Manager system may seem daunting. However, starting with a clean database in AMS Machine Works while also retaining your AMS Machinery Manager data offers an excellent path toward modernization—without sacrificing historical records or losing past work.

Consolidating your program under **AMS Machine Works v1.8** allows you to do exactly that. Retain your existing data while modernizing your condition monitoring program into one, unified system going forward.



One Software – Truly Integrated

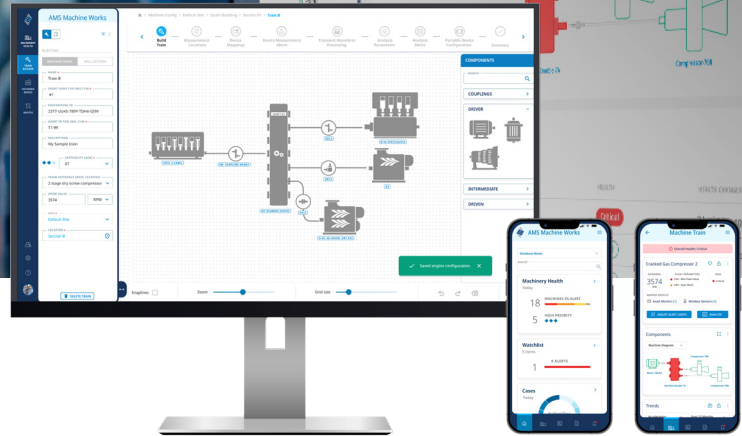
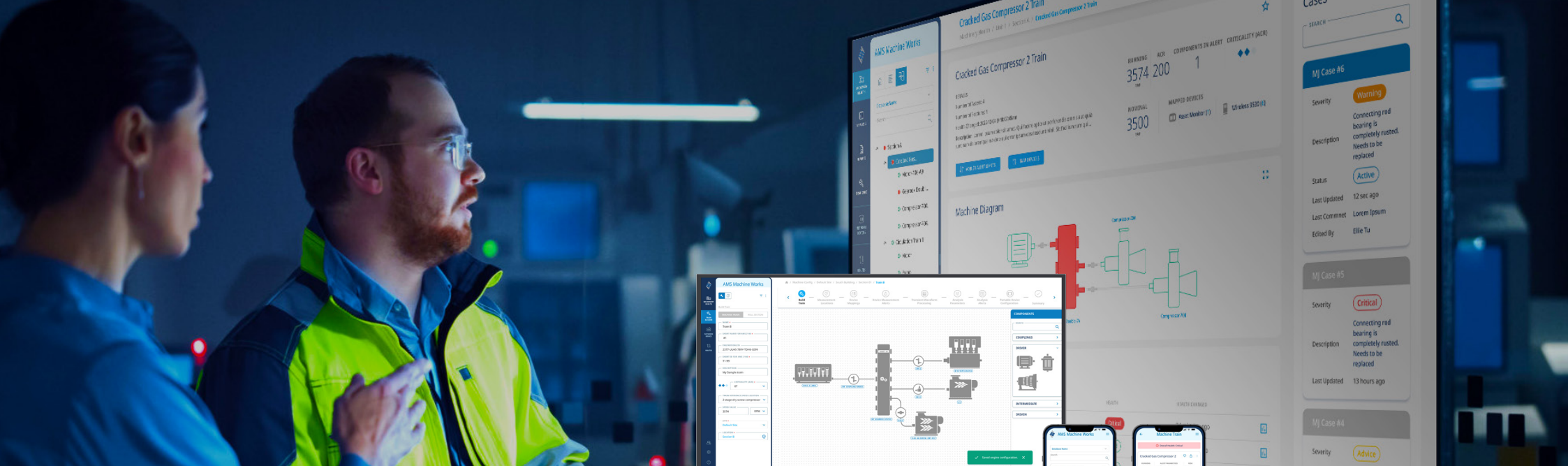
AMS Machine Works v1.8 provides you the ability to integrate your **AMS 2140 Machinery Health Analyzer** data to the same intuitive software that hosts **AMS Wireless Vibration Monitor, AMS Asset Monitor** and **AMS 6500 ATG** data.

Simplify diagnosis by comparing data from your portable route-based monitoring with your online or wireless monitoring strategies.

A truly integrated software that integrates all your condition monitoring data in one place, irrespective of your monitoring strategy.

Diagnose with ad hoc manual data collection and integrate the data in one place.





Modernize Easily – Keep Your Data

1

Evaluate if you have an AMS Machine Works license or are eligible to get one by working with your Emerson sales office.

2

Get your AMS Machinery Manager asset configuration transferred to your existing or new AMS Machine Works using Emerson's expert services at no cost. This is to speed up asset configurations and does not transfer data.

3

Retain all your AMS Machinery Manager historical data in your existing system for future references until you need.

4

Manage all new data collection and analysis in the new AMS Machine Works system.

5

If you are on a perpetual licensed system, renew your Guardian™ Support on time for all product updates and support. This is available at no additional cost to the subscription licenses.



AMS Machine Works System Capabilities



Integrates with AMS Wireless Vibration Monitor, AMS Asset Monitor, AMS 6500 ATG and AMS 2140.



A single server can handle up to 5,000 AMS Vibration Monitors and 400 AMS Asset Monitors.



Advanced User Manager allows for flexible user configuration with LDAP, AZURE AD and Local authentication.



AMS 2140 Route Management is supported. Future releases will support Transient and Advanced functionalities.



Multiple languages supported – Simplified Chinese, German, Russian, Japanese, Brazilian Portuguese.



Contact Us

Get started by contacting your Emerson representative directly, or submit your inquiry electronically (your Emerson representative will be notified).